



# CLEVE HILL SOLAR PARK

ENVIRONMENTAL STATEMENT  
VOLUME 2 - FIGURES - LANDSCAPE AND VISUAL IMPACT ASSESSMENT

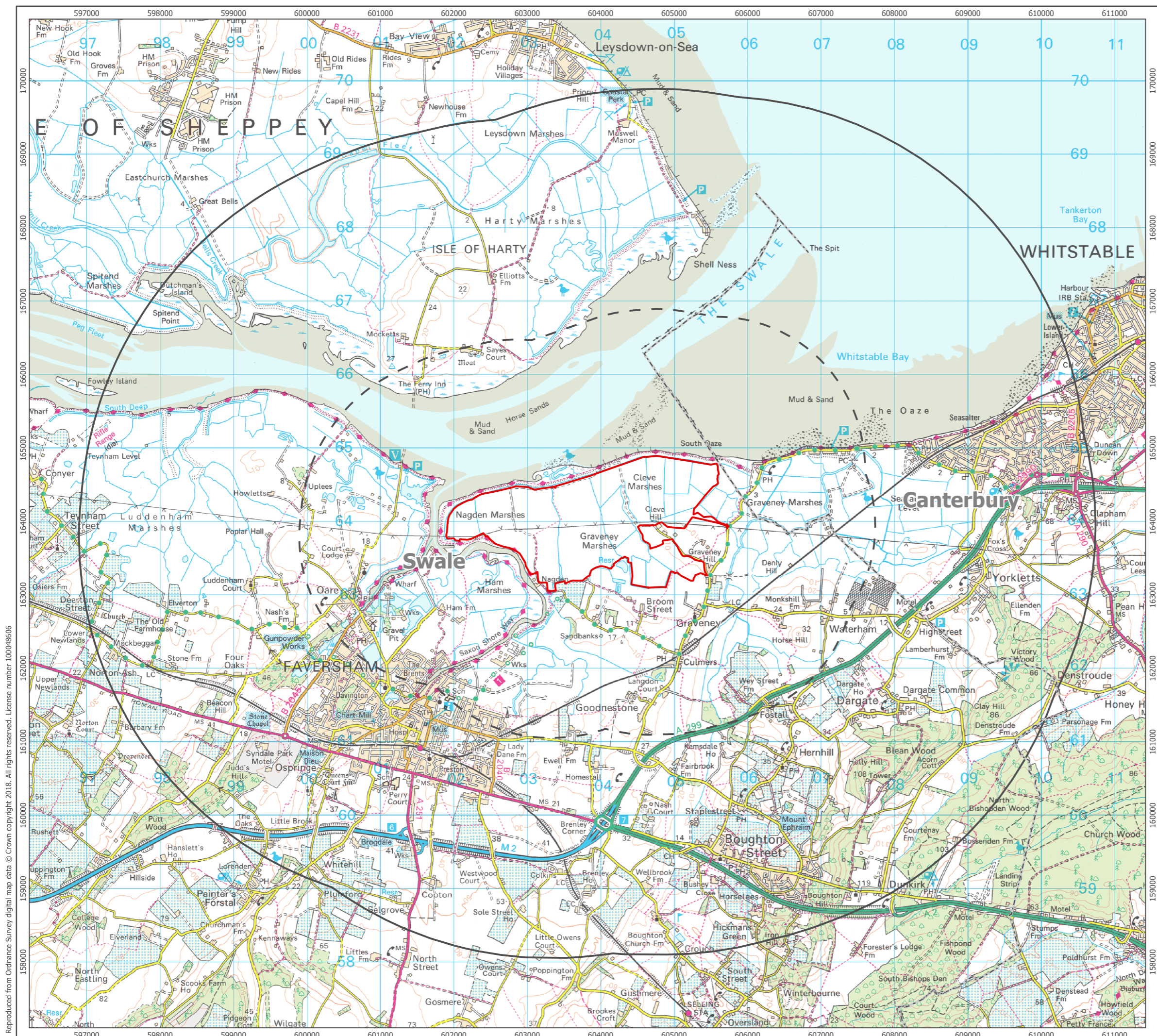
November 2018  
Revision A

Document Reference: 6.2.7  
APFP Regulation: 5(2)(a)



[www.clevehillsolar.com](http://www.clevehillsolar.com)







- Core Landscape Study Area
- 5 km Landscape Study Area
- 2 km Landscape Study Area

1:50,000 Scale @ A3  
  


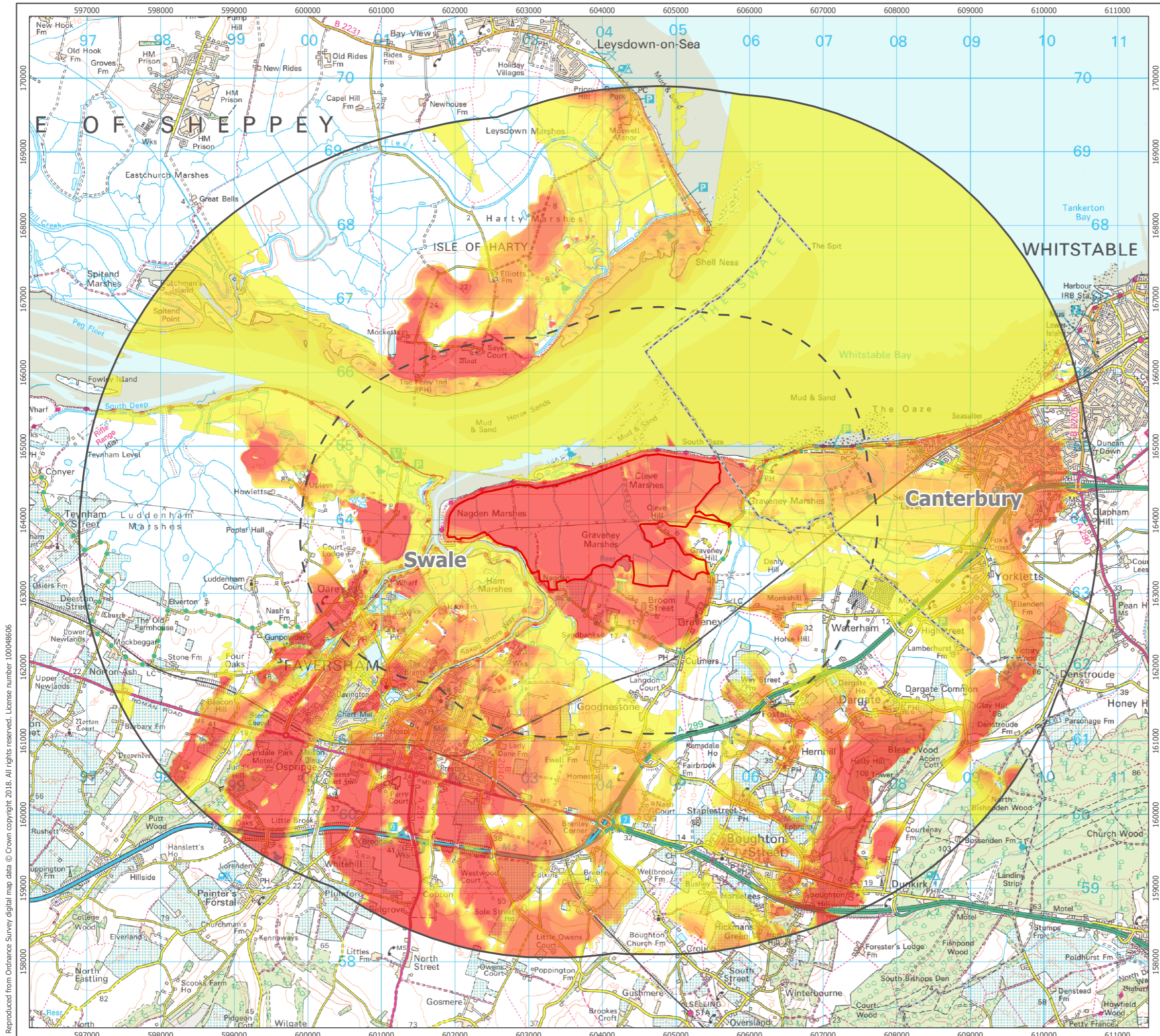
Produced By: SC	Ref: 2238-REP-181
Checked By: HL	Date: 08/11/2018

**Landscape and Visual Study Areas**  
Figure 7.1

**Cleve Hill Solar Park  
Environmental Statement**

Reproduced from Ordnance Survey digital map data © Crown copyright 2018. All rights reserved. License number 100048606





- Core Landscape Study Area
- 5 km Landscape Study Area
- 2 km Landscape Study Area
- Zone of Theoretical Visibility
- % of Development that may be visible
- 1 - 10
- 10 - 20
- 20 - 30
- 30 - 40
- 40 - 50
- 50 - 60
- 60 - 70
- 70 - 80
- 80 - 90
- 90 - 100

ZTV based on Ordnance Survey Terrain 5 DTM dataset.  
 Solar Panel heights vary across the Development Area and have been run at heights of 3.01 to 3.91 m Above Ground Level (AGL). Bund surrounding substation is 3.4 m AGL, and substation area is 11 m AGL. Viewer height is 1.7 m AGL.



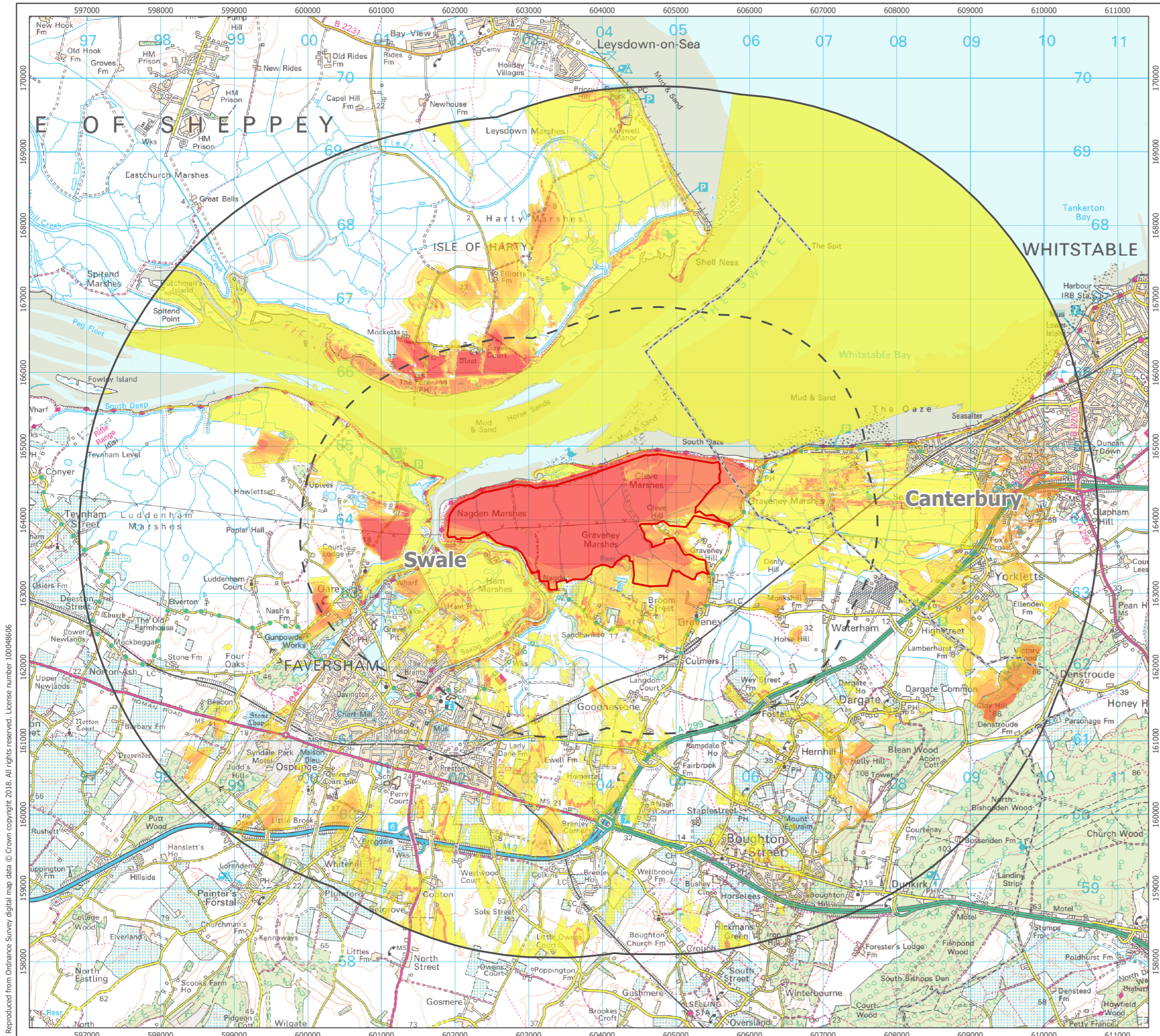
Produced By: KB	Ref: 2238-REP-182
Checked By: HL	Date: 08/11/2018

**ZTV - Bare Earth**  
Figure 7.2

**Cleve Hill Solar Park  
Environmental Statement**

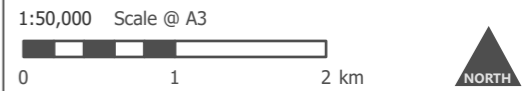
Reproduced from Ordnance Survey digital map data © Crown copyright 2018. All rights reserved. License number 100048606





- Core Landscape Study Area
- 5 km Landscape Study Area
- 2 km Landscape Study Area
- Zone of Theoretical Visibility
- % of Development that may be visible
- 1 - 10
- 10 - 20
- 20 - 30
- 30 - 40
- 40 - 50
- 50 - 60
- 60 - 70
- 70 - 80
- 80 - 90
- 90 - 100

ZTV based on 2 m raster LiDAR dataset sourced from the Environment Agency, combined with Tree Canopy heights from the National Tree Map. Solar Panel heights vary across the Development Area and have been run at heights of 3.01 to 3.91 m Above Ground Level (AGL). Bund surrounding substation is 3.4 m AGL, and substation area is 11 m AGL. Viewer height is 1.7 m AGL.



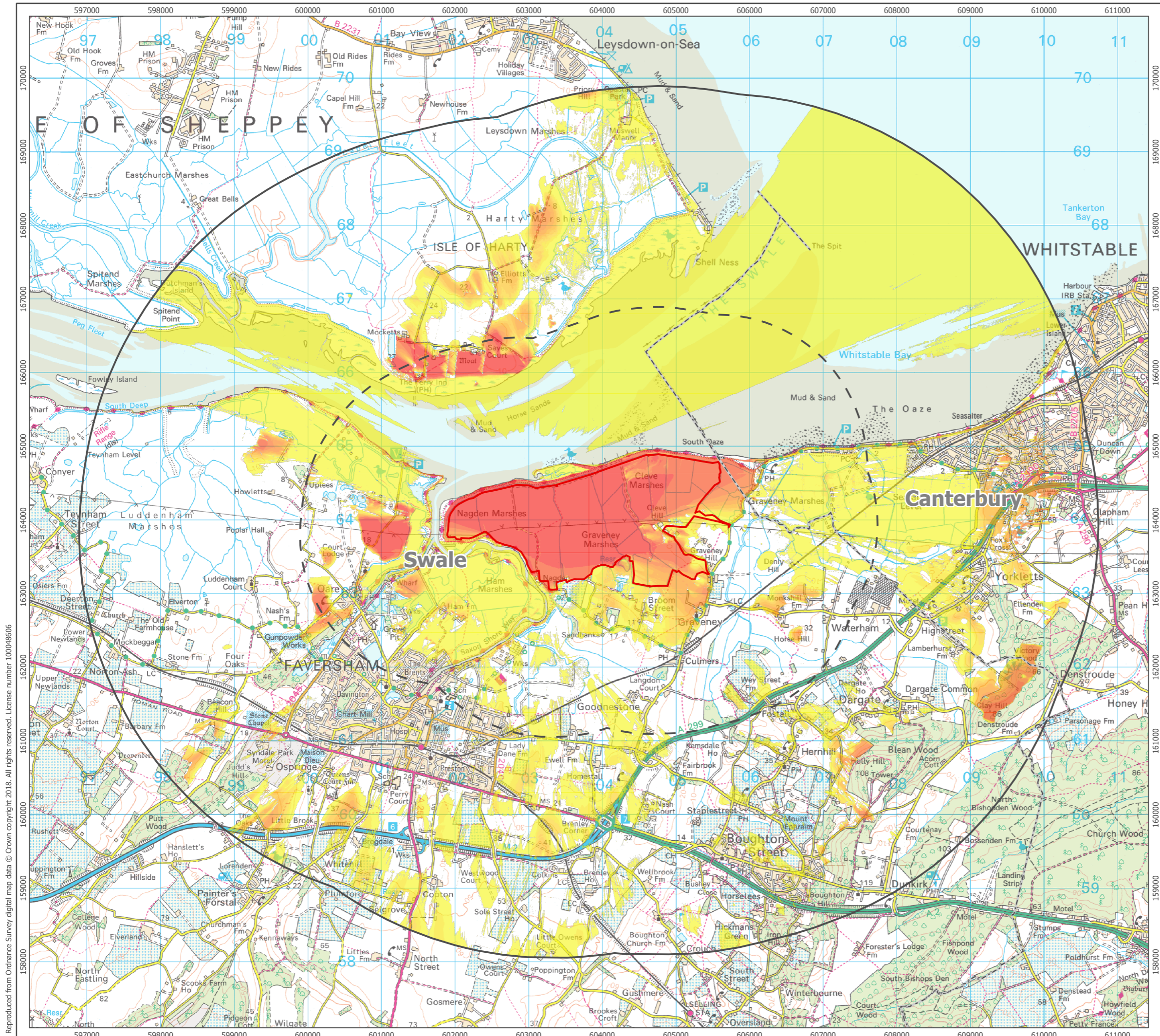
Produced By: SC	Ref: 2238-REP-183
Checked By: HL	Date: 08/11/2018

**ZTV - Local Context**  
Figure 7.3

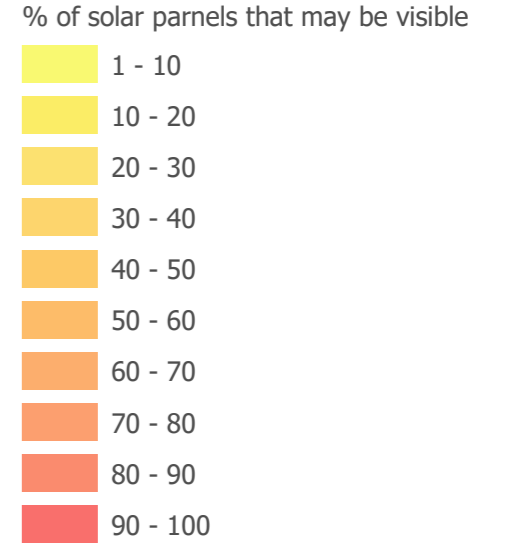
**Cleve Hill Solar Park  
Environmental Statement**

Reproduced from Ordnance Survey digital map data © Crown copyright 2018. All rights reserved. License number 100048606

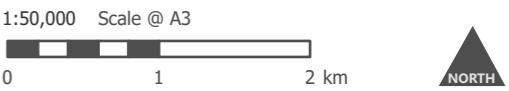




- Core Landscape Study Area
- 5 km Landscape Study Area
- 2 km Landscape Study Area
- Zone of Theoretical Visibility of Solar Panels



ZTV based on 2 m raster LiDAR dataset sourced from the Environment Agency, combined with Tree Canopy heights from the National Tree Map. Solar Panel heights vary across the Development Area and have been run at heights of 3.01 to 3.91 m. Viewer height is 1.7 m AGL.



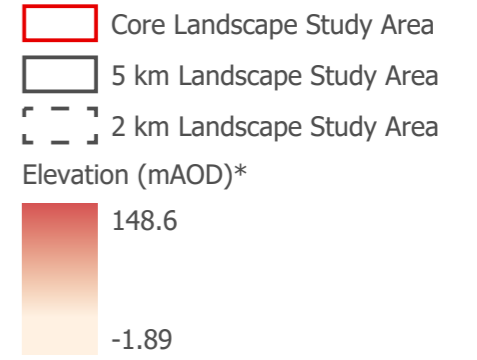
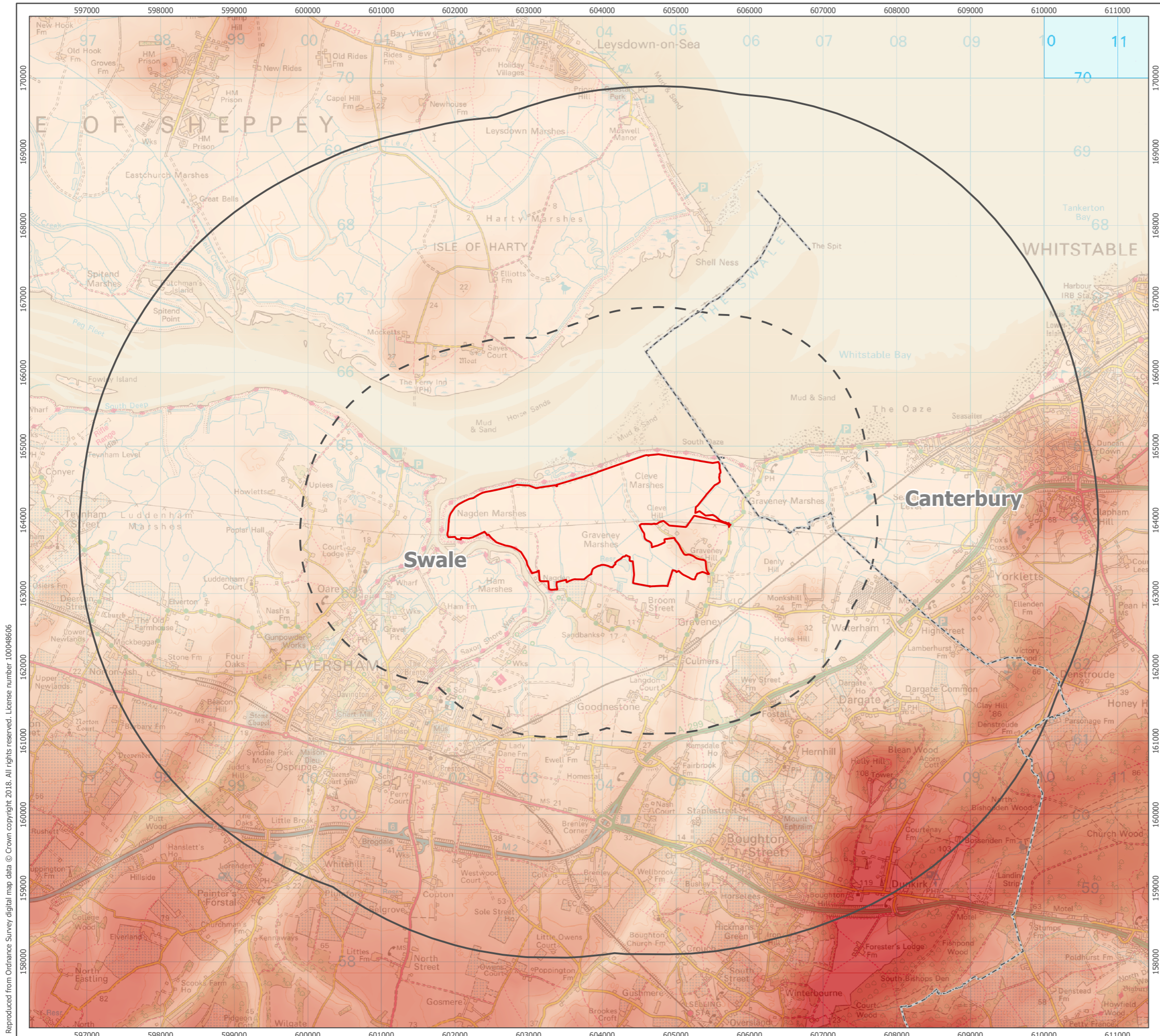
Produced By: SC	Ref: 2238-REP-183
Checked By: HL	Date: 08/11/2018

**ZTV Panels only with Local Context**  
Figure 7.3A

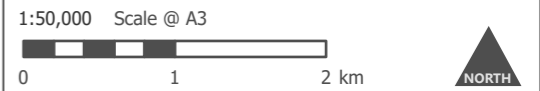
**Cleve Hill Solar Park  
Environmental Statement**

Reproduced from Ordnance Survey digital map data © Crown copyright 2018. All rights reserved. License number 100048606





\*Topography is based on Ordnance Survey Terrain 5 Dataset.



Produced By: SC	Ref: 2238-REP-184
Checked By: MT	Date: 08/11/2018

**Site Topography**  
Figure 7.4

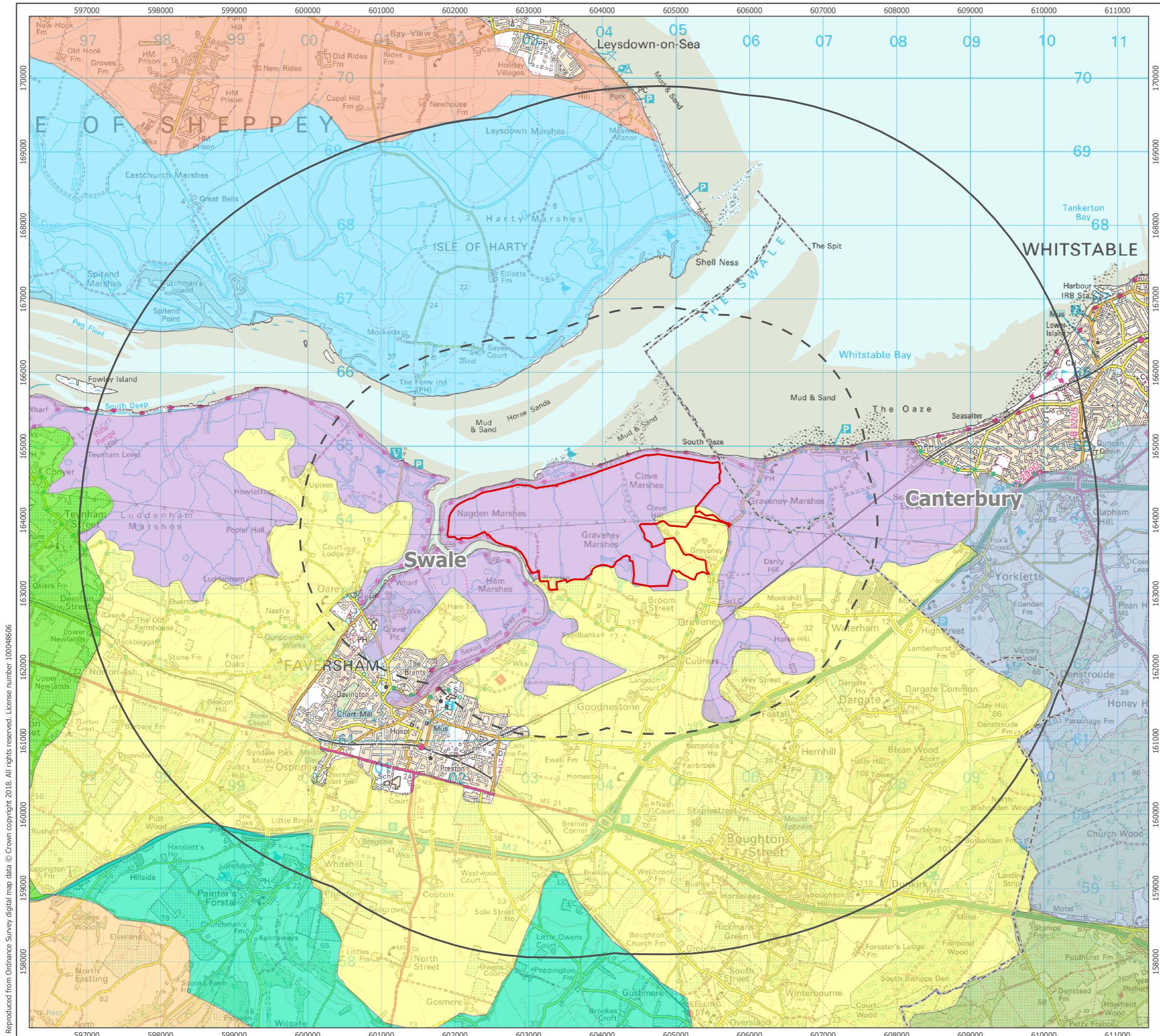
**Cleve Hill Solar Park**  
**Environmental Statement**

Reproduced from Ordnance Survey digital map data © Crown copyright 2018. All rights reserved. License number 100048606

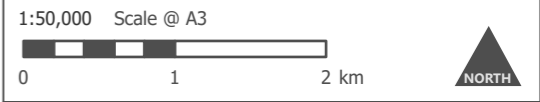








- Core Landscape Study Area
- 5 km Landscape Study Area
- 2 km Landscape Study Area
- Landscape Assessment of Kent, October 2004
- Eastern Fruit Belt
- Eastern Swale Marshes
- Swale Marshes
- Bicknor: Mid Kent Downs
- North Kent Fruit Belt
- Faversham Fruit Belt: Mid Kent Downs
- North Sheppey
- Fruit Belt
- The Blean



Produced By: SC	Ref: 2238-REP-186
Checked By: HL	Date: 08/11/2018

**Regional Landscape Character Areas**  
 Figure 7.6

**Cleve Hill Solar Park Environmental Statement**

Reproduced from Ordnance Survey digital map data © Crown copyright 2018. All rights reserved. License number 100048606



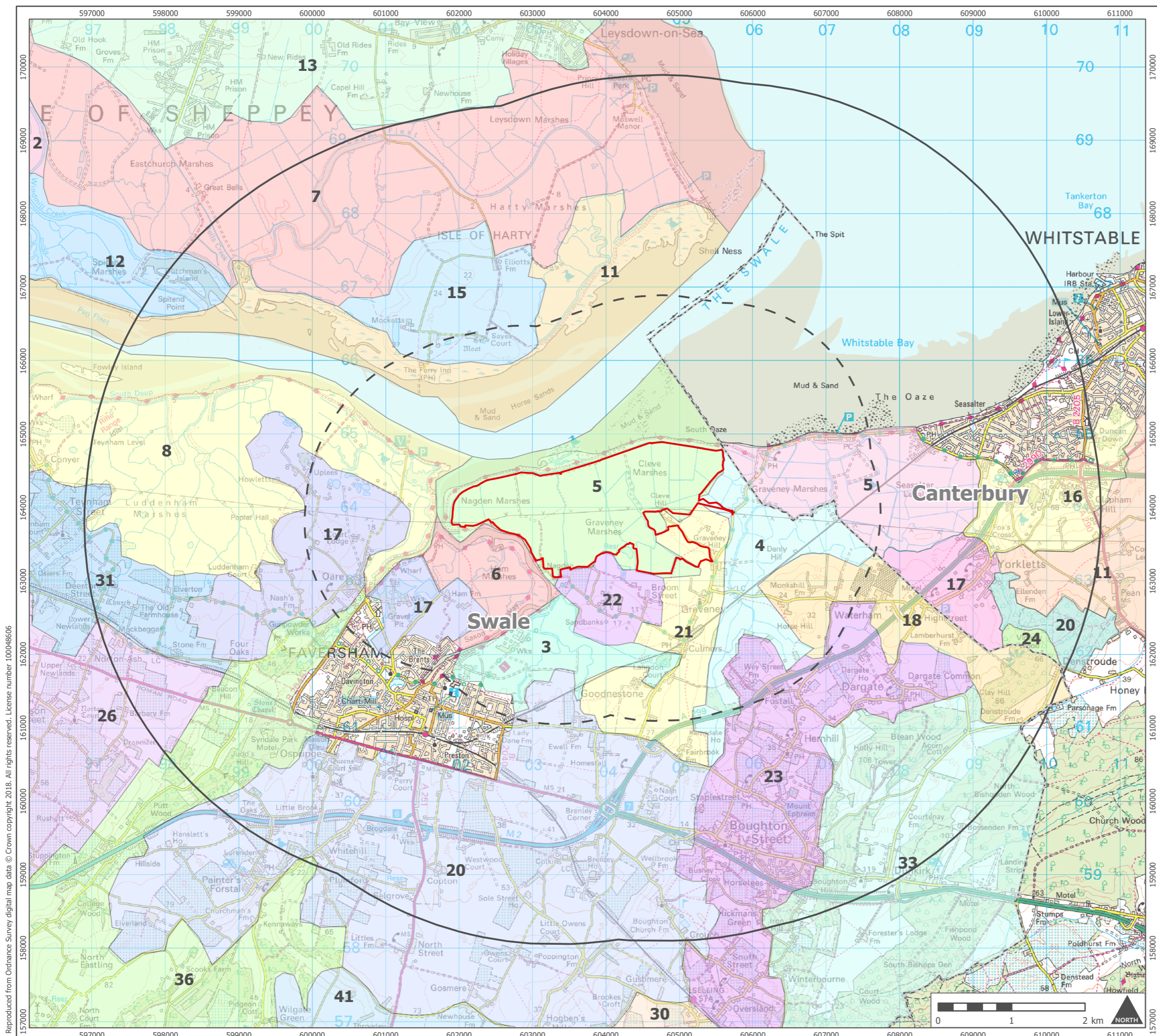
- Core Landscape Study Area
  - 5 km Landscape Study Area
  - 2 km Landscape Study Area
  - Local Authority Boundary
- Swale Landscape Character and Biodiversity Appraisal, September 2011
- 33 Blean Woods West
  - 13 Central Sheppey Farmlands
  - 36 Doddington and Newnham Dry Valleys
  - 2 Elmley Marshes
  - 20 Faversham and Ospringe Fruit Belt
  - 3 Goodnestone Grasslands
  - 21 Graveney Arable Farmlands
  - 22 Graveney Fruit Farms
  - 4 Graveney Grazing Lands
  - 5 Graveney Marshes
  - 6 Ham Marshes
  - 23 Hernhill and Boughton Fruit Belt
  - 15 Isle of Harty
  - 7 Leysdown and Eastchurch Marshes
  - 8 Luddenham and Conyer Marshes
  - 26 Lynsted Enclosed Farmlands
  - 30 Selling Fruit Belt
  - 41 Sheldwich and Leaveland Farmlands
  - 11 South Sheppey Saltmarshes and Mudflats
  - 12 Spitend Marshes
  - 17 Stone Arable Farmlands
  - 31 Teynham Fruit Belt
  - 18 Waterham Clay Farmlands
- Canterbury Landscape Character and Biodiversity Appraisal, August 2012
- 20 Blean Woods: Yorkletts
  - 24 Clay Hill
  - 11 Court Lees and Millstrood Farmlands
  - 5 Seasalter Marshes
  - 16 Wraik Hill
  - 17 Yorkletts Farmlands

Scale @ A3  
1:50,000

Produced By: SC	Ref: 2238-REP-187
Checked By: HL	Date: 08/11/2018

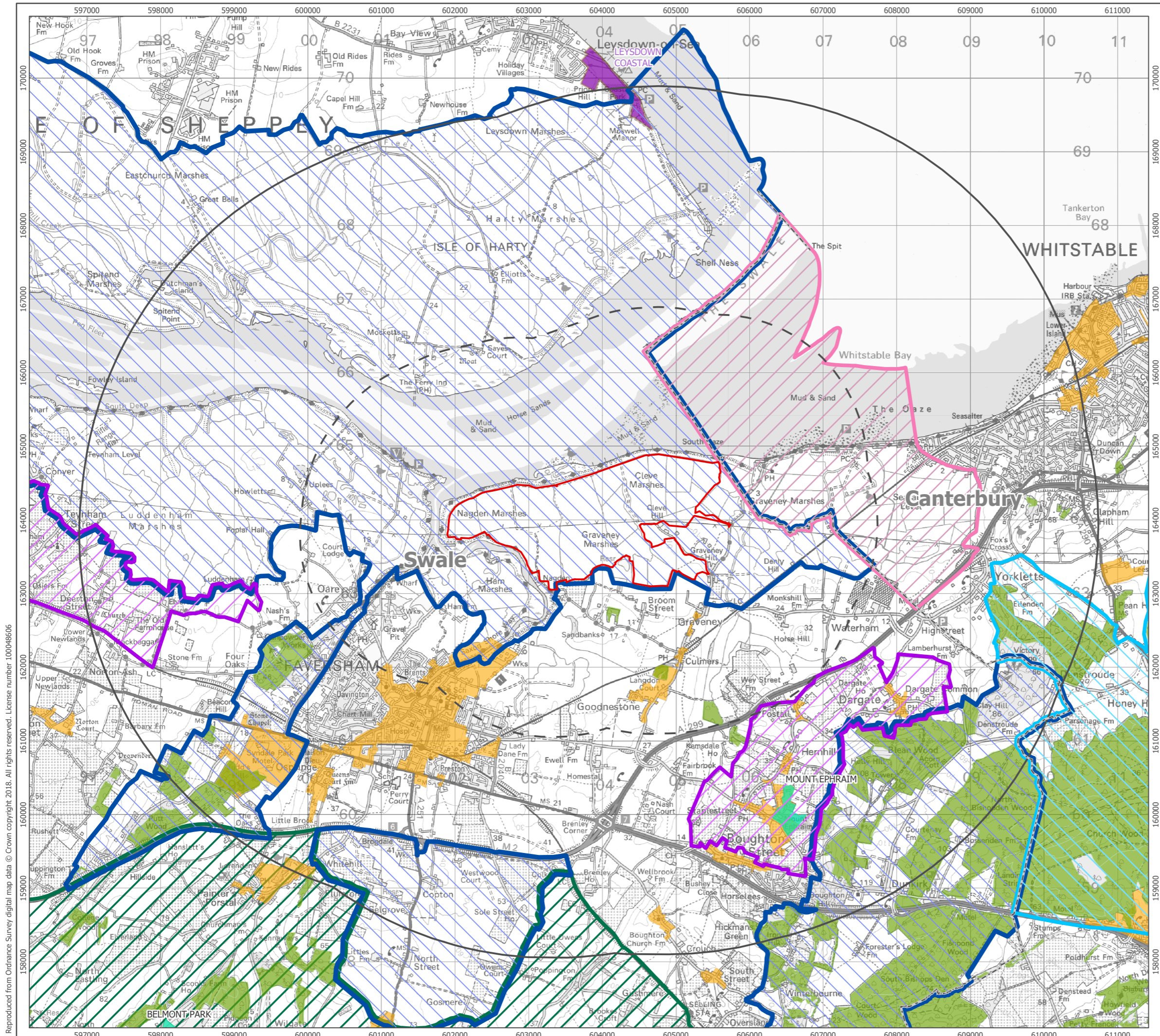
**Local Landscape Character Areas**  
Figure 7.7




**Cleve Hill Solar Park**  
**Environmental Statement**





Reproduced from Ordnance Survey digital map data © Crown copyright 2018. All rights reserved. License number 100048606





-  Core Landscape Study Area
-  5 km Landscape Study Area
-  2 km Landscape Study Area
-  Kent Downs Area of Outstanding Natural Beauty
-  Area of High Landscape Value (Swale Level) DM24 (Bearing Fruits 2013: The Swale Borough Local Plan Full Council item, 26th July 2017)
-  Area of High Landscape Value (North Kent Marshes) Policy LB2 (Canterbury District Local Plan, Adopted July 2017) North Kent Marshes
-  Area of High Landscape Value (Blean Woods) Policy LB2 (Canterbury District Local Plan, Adopted July 2017)
-  Area of High Landscape Value (Kent Level) DM24 (Bearing Fruits 2013: The Swale Borough Local Plan, Full Council item, 26th July 2017)
-  Conservation Area
-  Registered Park and Garden
-  Ancient Woodland
-  Country Parks

1:50,000 Scale @ A3  
  


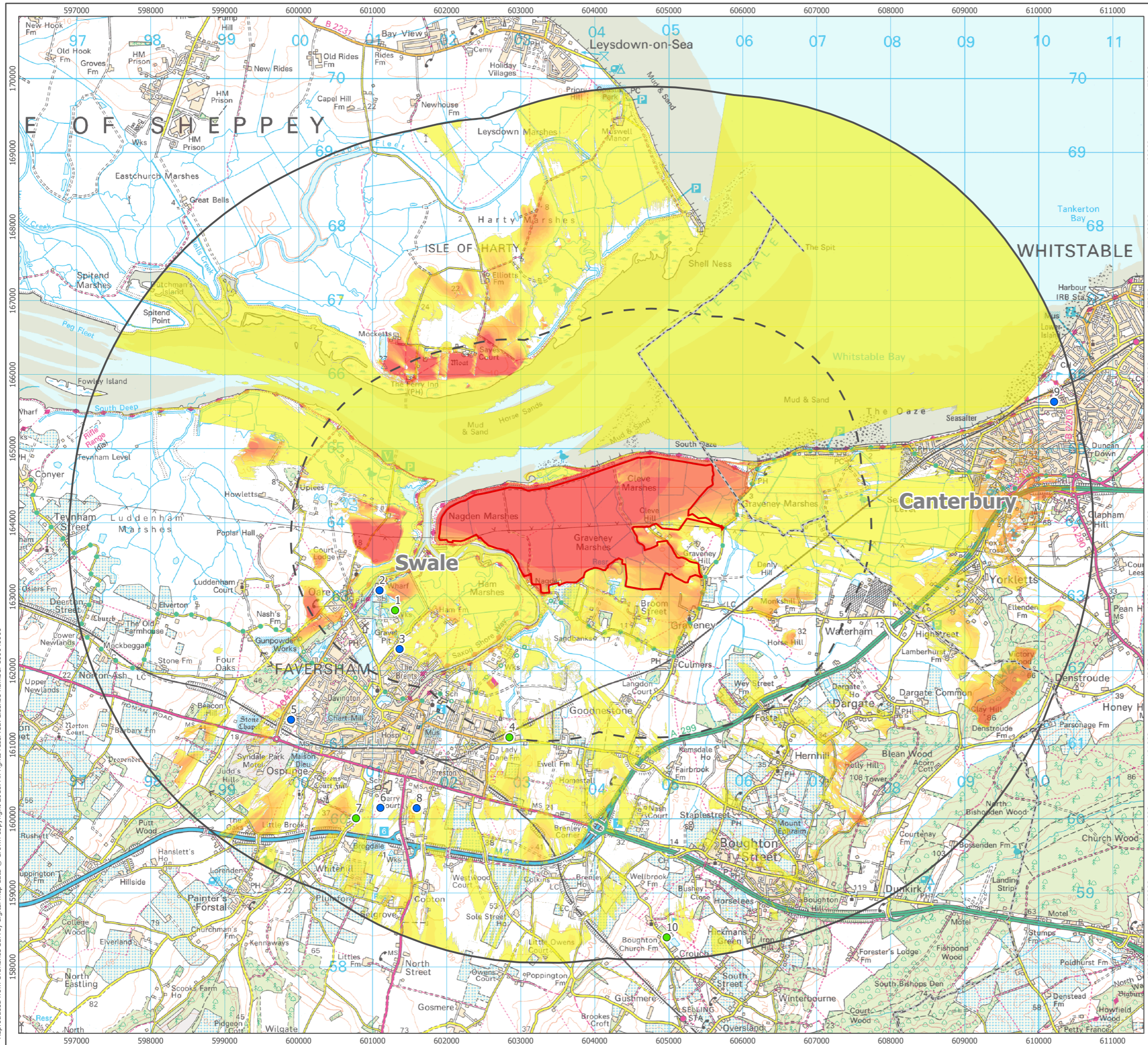
Produced By: SC	Ref: 2238-REP-188
Checked By: HL	Date: 08/11/2018

**Landscape Designations**  
Figure 7.8

**Cleve Hill Solar Park**  
Environmental Statement

Reproduced from Ordnance Survey digital map data © Crown copyright 2018. All rights reserved. License number 100048606





- Core Landscape Study Area
- 5 km Landscape Study Area
- 2 km Landscape Study Area

Cumulative Development

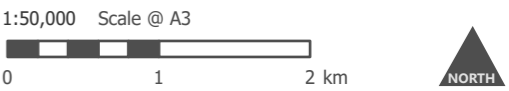
- Application Permitted
- Awaiting Decision
- EIA Scoping

Zone of Theoretical Visibility

% of Development that may be visible

- 1 - 10
- 10 - 20
- 20 - 30
- 30 - 40
- 40 - 50
- 50 - 60
- 60 - 70
- 70 - 80
- 80 - 90
- 90 - 100

ZTV based on 2 m raster LiDAR dataset sourced from the Environment Agency, combined with Tree Canopy heights from the National Tree Map. Solar Panel heights vary across the Development Area and have been run at heights of 3.01 to 3.91 m Above Ground Level (AGL). Bund surrounding substation is 3.4 m AGL, and substation area is 11 m AGL. Viewer height is 1.7 m AGL.



Produced By: SC	Ref: 2238-REP-251
Checked By: HL	Date: 08/11/2018

**Cumulatives and Local Context ZTV**  
Figure 7.9

**Cleve Hill Solar Park**  
**Environmental Statement**

Reproduced from Ordnance Survey digital map data © Crown copyright 2018. All rights reserved. License number 100048606





- Core Landscape Study Area
- 5 km Landscape Study Area
- 2 km Landscape Study Area
- Viewpoint and Photomontage Location
- Viewpoint Location

1:60,000 Scale @ A3  
  


Produced By: SC	Ref: 2238-REP-189
Checked By: HL	Date: 08/11/2018

**Viewpoint and  
Photomontage Locations**  
Figure 7.10

**Cleve Hill Solar Park  
Environmental Statement**

Reproduced from Ordnance Survey digital map data © Crown copyright 2018. All rights reserved. License number 100048606